

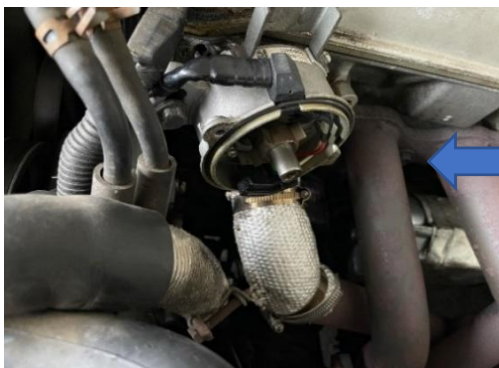
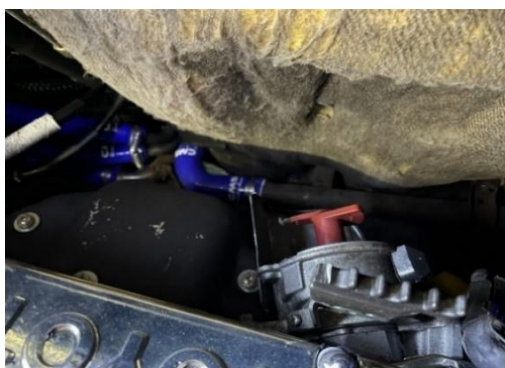
AW11 4A-GELC High-Performance Coil Direct Ignition Kit Installation Manual

- | | | | |
|---------|---|--|--|
| Content | <input type="checkbox"/> Ignition coils(TM00100-2+A) x 4 | <input type="checkbox"/> Control unit(CPT012) x 1 | <input type="checkbox"/> 15A fuse holder(DP024) x 1 |
| | <input type="checkbox"/> ign. coils base plate(HPD101-US) x 1 | <input type="checkbox"/> distributor cap(HPD105) x 1 | <input type="checkbox"/> M6X10 high nut x 4 |
| | <input type="checkbox"/> distributor rotor(HPD103) x 1 | <input type="checkbox"/> Ne signal 2P extension harness(HPD107-K5) x 1 | |
| | <input type="checkbox"/> 3P extension harness(HPD107-A) x 1 | <input type="checkbox"/> 5P extension harness(HPD107-K6) x 1 | |
| | <input type="checkbox"/> flat bracket A(VSDS-1) x 1 | <input type="checkbox"/> Ignition coil end cap x 1 | <input type="checkbox"/> thru-connector(VH1028) x 1 |
| | <input type="checkbox"/> Harness(FDI002H) x 1 | <input type="checkbox"/> earth cable1m x 1 | <input type="checkbox"/> L-shaped aluminum bracket B(VSDS-2) x 1 |
| | <input type="checkbox"/> 6X30 flanged bolt x 4 | <input type="checkbox"/> 6X15 flanged bolt x 1 | <input type="checkbox"/> M6 flanged nut x 5 |
| | <input type="checkbox"/> 6X15 SUS WA bolt x 4 | <input type="checkbox"/> 6X30 SUS WA bolt x 2 | <input type="checkbox"/> 18X2mm o-ring x 1 |
| | <input type="checkbox"/> M6 SUS Spwasher x 4 | <input type="checkbox"/> 200mm cable tie x 5 | <input type="checkbox"/> double sided tape x 1 |

1. Please adjust to the prescribed ignition timing according to the manufacturer's maintenance manual.

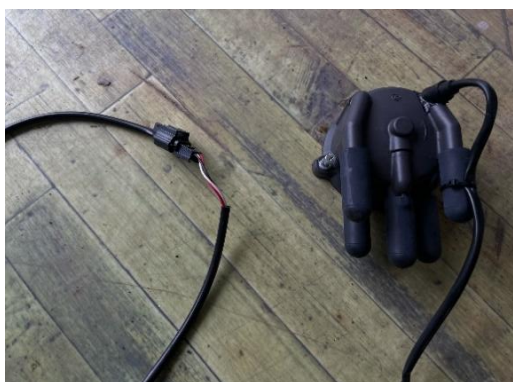


2. Remove the high tension cables, center plate, dist. cap, and rotor.



For better understanding,
4AG images are used.

3. Connect the 3P extension harness (HPD107-A) to the dedicated distributor cap (HPD105).



4. Install the provided specific rotor (HPD103) and dist. cap (HPD105).

No,2



**Make sure to align the rotor properly before pushing it to place as it will crack if misaligned.
If the distributor does not have a heat shield, be sure to install it.**



Secure the 3P harness with a cable tie.

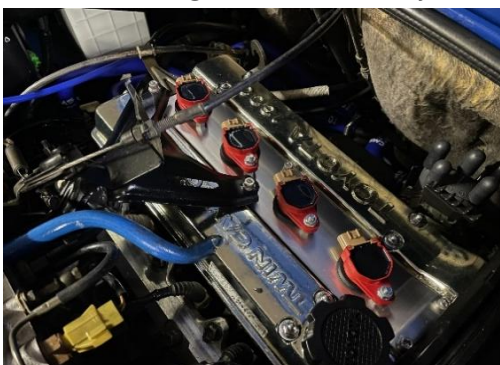
5. Insert the 6X30 flanged bolts to the base plate and secure it with the M6 SUS washers and M6X10 high nuts as shown in pictures below.



6. Fix the coil base plate with the 6X15 SUS bolts.



7. Insert the ignition coils firmly and secure it with the provided flanged nuts.



8. Please connect the harness to the igniton coils. Insert it firmly until a "CLICK" sound is heard. **No,3**



9. Connect one end of the provided 1m earth cable to the engine block.



10. Disconnect the round 5P connector from the igniter on top of the original ignition coil.



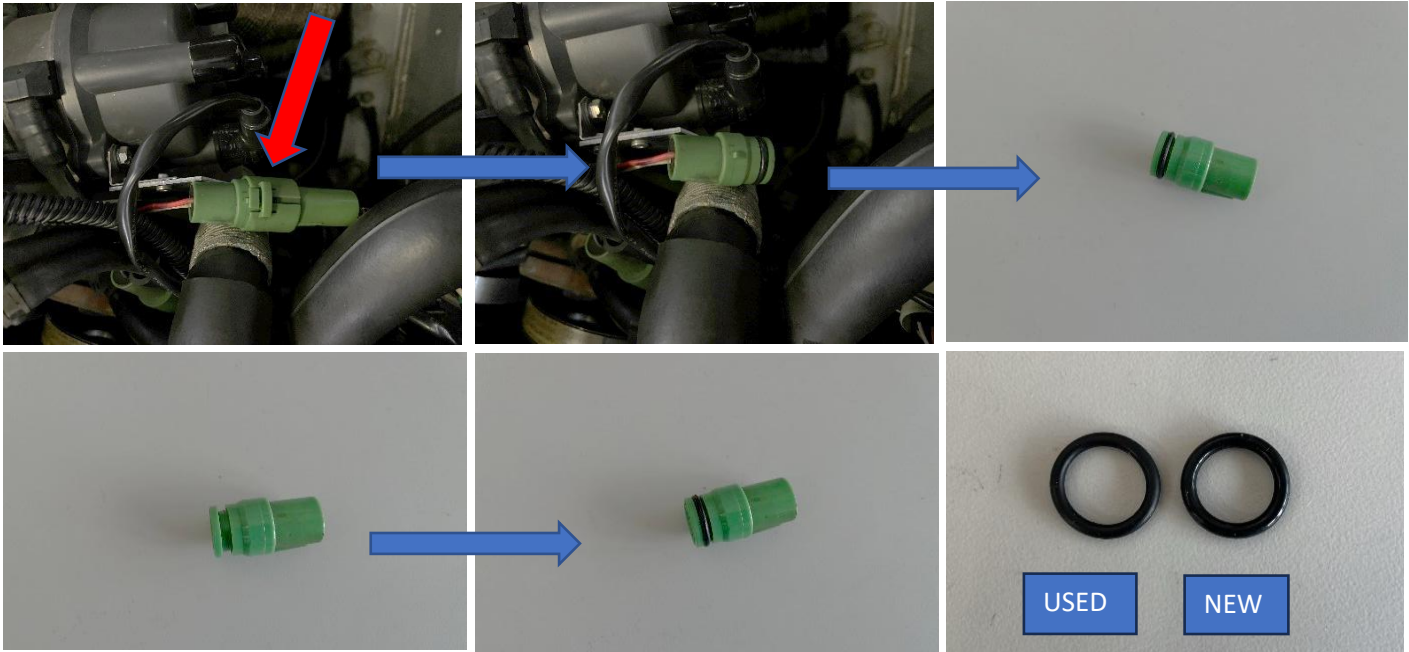
11. Connect the removed round 5P connector from step above to the 5P extension harness (HPD107-K6).



12. Fix the L-shaped bracket (VSDS-2) to the part indicated by the arrow. (First remove the side panel)



13. Remove the distributor's 2P connector marked with an arrow and replace the O-ring of the vehicle's 2P connector (red/white wire) with the included O-ring.



14. Connect to the round 2P connector on the control unit.
(HPD107-K5)

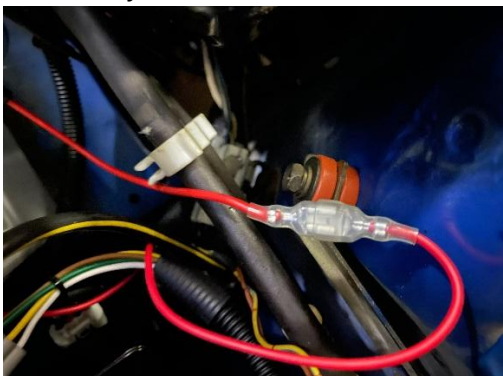


Images from 4A-GEC are used as reference.

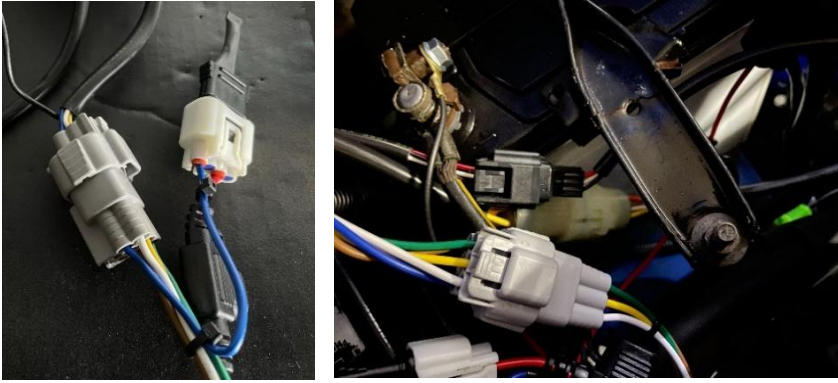
15. Attach the control unit to the flat bracket (VSDS-1) with double-sided tape, and then secure it to the L bracket (VSDS-2) with 6X15 bolt.



16. Firmly insert the 15A fuse holder (DP024) into the red wire of the control unit.



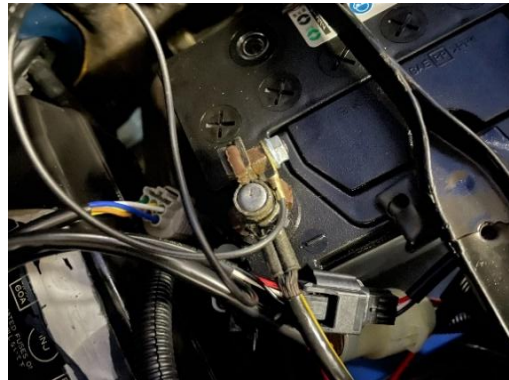
17. Connect the control unit wiring to the coil harness 6P connector, 3P connector from distributor cap, 5P from the signal harness and Ne signal 2P connector respectively.



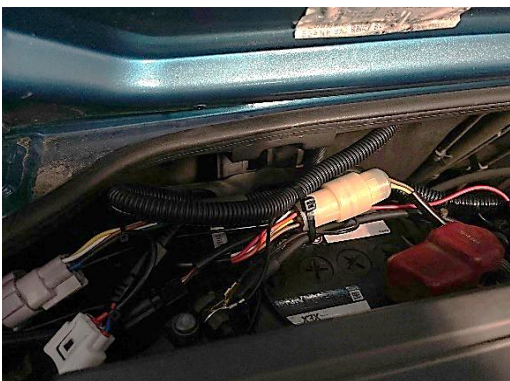
18. Install the left engine hood side panel.



19. Connect the red wire from the control unit to the battery positive (+VE) terminal.
Connect the black wires from the control unit and coil harness, and the other end of the earth cable to the battery negative (-VE) terminal.



20. Secure the excessive harness with cable ties.



Leaving the harness loose is extremely dangerous, so be sure to secure it.

21. Insert the coil end cap to the ignition coil.

No,6



Be sure to bleed the air before inserting to prevent it from coming loose.



22. Start the engine, make sure there is no abnormality, and the installation is complete.



Control unit LED

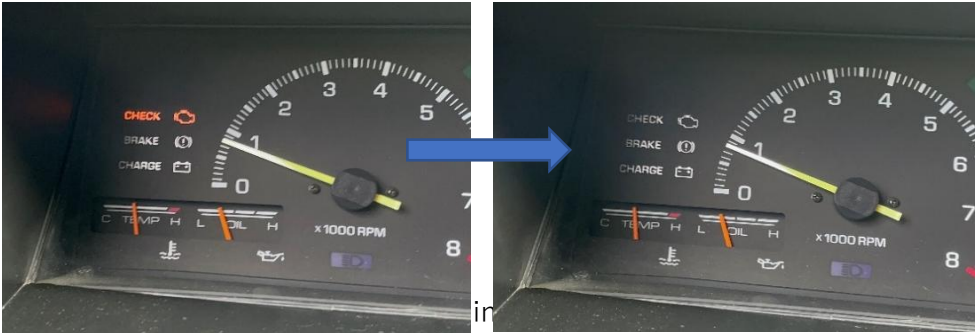
Key ON: Blinks once

Engine start:

Below 1000 rpm: LED off

Over 1000 rpm: LED on

Since the NE signal is output for a longer period than normal when the engine is started, the engine check lamp will not go off for about 10 seconds, but this is not an abnormality.



Important Notice

! If the engine stalled, be sure to turn the ignition key completely OFF, not to ACC, before restarting the engine. (if you do not follow this, the engine will not start)

! The magnet used for the pickup is not compatible with high heat, so be sure to install a heat shield in between the exhaust manifold and the distributor.

! Please be extra careful as the engine will be difficult to start if the response of the pickup is poor.

! Pickup magnet is available to purchase separately, so please contact us.

! When installing this product, it's advisable to replace a new set of spark plugs at the same time.

! Please keep the removed parts in a safe place as they will be needed when returning back to stock.

T.M.WORKS